

# WESTVALE INDUSTRIAL SUPPLY

We specialize in the sale of industrial equipment, specifically **pneumatic components**. Our selection includes, but is not limited to: • **solenoid valves** • **air preparation equipment** • **cylinders** • **fittings** • **gauges** and • **air actuators**. In addition to parts sales, we also offer **custom built panels and actuation assemblies**.

**Westvale Industrial Supply**, established in 1993, prides itself in the quality and range of products offered and the technical knowledge of its staff. We feel that the quality and personal service we offer is what has kept our loyal customers coming back to us for **over 30 years**.



**WE CARRY THE BRANDS YOU TRUST**

**IF YOU DON'T SEE WHAT YOU NEED, WE'LL GET IT FOR YOU.**

## **Westvale Industrial Supply**

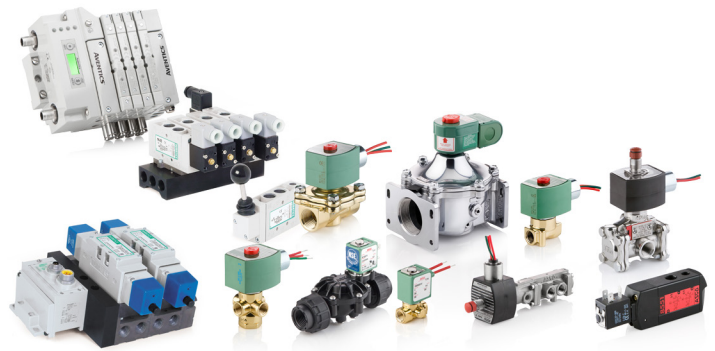
5454 192nd Street Surrey, British Columbia, Canada V3S 8E5

Phone: **604-576-6800** Fax: **604-576-8718** [westvaleindustrial.com](http://westvaleindustrial.com)



## ACTUATORS

- **NFPA Aluminum**, all standard mounts and accessories
- **NFPA All Steel**, all standard mounts and accessories
- **ISO/VDMA Aluminum**, all standard mounts and accessories
- **ISO 6432 Aluminum**, all standard mounts and accessories
- **Round Line Non-Repairable Aluminum / Stainless Steel** and Delrin all standard mounts and accessories
- **Compact Cylinders** Aluminum, all standard mounts and accessories
- **KG Cylinder** Knife Gate actuators
- **Hydraulic Cylinders** Steel, all pressures, mounts and accessories
- **Air Bellows** Single, Double and triple convoluted
- **Specialty Actuators** Slides, Rodless, Grippers, rotary actuators and more
- **Electric Actuators**, drives and controllers.



## CONTROL VALVES

- **2 WAY** Normally Open or Closed, Solenoid or manually operated.
- **3 WAY** Normally Open or Closed, Solenoid or manually operated, individual or manifold.
- **4 WAY** 2 position Solenoid or manually operated, individual or manifold mount and ISO.
- **5 WAY** 3 position Solenoid or manually operated, individual or manifold mount and ISO.
- **Electronically Enhanced** Variety of Protocols, I/O's and configurations
- **Specialty Valves** NSF Approved, Explosion Proof, Combustion and more.



## AIR PREPARATION (FRL'S)

- **Particulate Filters** Variety of sizes, options and micron ratings,
- **Coalescing Filters** (Oil removing) Variety of sizes, options and micron ratings.
- **Regulators** Variety of sizes, pressures and options
- **Lubricators** Variety of sizes and options
- **Accessories** Gauges, Lock outs, quick exhausts, tamper proof and more...
- **Specialty Products** High flow filters, Dryers and timed drains, pressure switches and more....



## FITTINGS, TUBING AND ACCESSORIES

- **Push On Fittings** Standard and metric sizes
- **Flow Controls** Standard and metric size threaded and push on.
- **Check Valves** Variety
- **Mufflers** Plastic and Metal, Standard and Speed control type
- **Quick Exhaust** Variety of sizes
- **Slide Valves** Variety of sizes
- **Rubber Hose** Variety of sizes and materials
- **Fittings** Brass, Stainless Steel, Iron, elbow, straight, hose barb and more
- **Aluminum Air Line** Variety of sizes, fittings and accessories





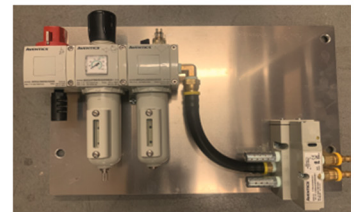
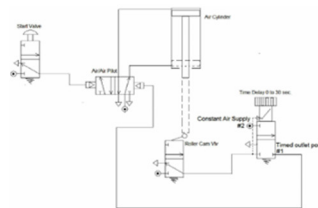
## VACUUM PRODUCTS

- **Vacuum Cups** Variety of sizes, types and materials
- **Vacuum Generators** Variety of sizes
- **Vacuum Filters** Variety of size and materials
- **Vacuum Accessories** Gauges, switches, fittings, tubing and more



## PROCESS VALVES

- **Ball Valves** One-, two- and three-piece body design, Threaded, Socket Weld and Flanged, Brass, Cast and Forged, Carbon Steel, Stainless Steel and Special Alloys
- **Butterfly Valves** Lug or Wafer Style, Ductile Iron or Stainless-Steel body, Lever or Gear Operated, Variety of seat and disc material available.
- **Gate Valves** Bronze, Brass, Iron, Stainless Steel and Special Alloys, Threaded, Welded, Flanged
- **Globe Valves** Bronze, Brass, Iron, Stainless Steel and Special Alloys, Threaded, Welded, Flanged
- **Check Valves** Bronze, Brass, Iron, Stainless Steel and Special Alloys, Threaded, Welded, Flanged
- **Knife Gate Valve** Full Flanged, Lug, Wafer Style, Metal Seated, Resilient seated, O Port, WCB, Ductile Iron, Stainless Steel and special alloys or coatings.
- **Strainers** Iron, Bronze (NSF), Carbon, Stainless Steel and Special Alloys. Threaded, Socket weld and flanged.



## ACTUATION

- **Pneumatic** Quarter Turn, Linear, Double acting, Spring Return, Proportional control, Composite, Aluminum, Steel, Stainless-Steel bodies and special coatings. ISO Mount, Namur Mount
- **Electric** Quarter Turn, Spring return, wide range of voltages, On/Off. Proportional control, position feed back, ISO Mount, CSA, Explosion proof and other ratings
- **Special Actuators** Pneumatic/Hydraulic
- **Accessories** Beacon Indicators, Switches, Adapters, Filters, Regulators, Valves, Manual overrides and more

## VALUE ADDED

- **Schematics** Provide drawings for pneumatic circuits.
- **Custom Panels** Mount and test parts as required on a panel or in an enclosure.
- **Valve Assemblies** Assemble and test valve assemblies in house.
- **Valve and Cylinder Repairs** On the brands we represent
- **Actuator Mounting** Assembly, mounting and testing in house.
- **Plant Visits** To provide recommendations on how to improve the compressed air quality to improve production and reduce down time.
- **Sourcing** We will source any products that you require to keep your operations running.



## ONE STOP SHOP

**ASCO**  
numatics



**EMERSON**

**AVENTICS**

**Green Line**  
HOSE & FITTINGS LTD.

**AIGNEP**

*Humphrey*

**AIRTAC**



**FreelinWade**  
A COLHOSE COMPANY

**WIKAI**

**M.A. Stewart & Sons Ltd.**

**ALWITCO**

**FUCHS**



**TOPRING**  
Compressed Air Solutions

**Parker**  
**ORIGA**

**JAX**



**FOSTER**  
MANUFACTURING COMPANY

**VIAIR**

*VacMotion* CANADA

**WEST VALE**  
**INDUSTRIAL**  
S U P P L Y

5454 192nd Street Surrey, British Columbia, Canada V3S 8E5  
Phone: **604-576-6800** Fax: **604-576-8718**  
[westvaleindustrial.com](http://westvaleindustrial.com)